

ALSICO
more than workwear



CLEANROOM



CLEANAREA



ESD



FOOD



OPTIONS

E

FOR **CLEANROOM** ENVIRONMENTS

clean  work



As the number one manufacturer and supplier of workwear and protective clothing, **Alsico** has been for many years a specialist in the tailoring of high technology cleanroom and cleanarea garments.

Our continual input into garment design to meet the changing demands and specifications within the cleanrooms and cleanareas combined with a close relationship with fabric suppliers and laundries ensures that we continue to supply garments to meet the most critical standards and norms.

Our new **Clean4Work** collection provides comfortable, easy-to-maintain, High Tech garments for the micro-electronic, electronic, pharmaceutical, automotive, optical and food industries together with outstanding wear performance for cleanroom classes 1 to 10 000.

Only the highest quality fabrics and the most up-to-date developments are selected and based on six key criteria:

- High durability
- ESD performance
- Universal sterilisation protection
(Steam – ETO – Gamma – Beta radiation)
- Particle barrier
- Low-linting
- Comfort

A special processing technique, engineered by **Alsico**, is used to prevent fraying. Seams, sewing threads and accessories fully meet the requirements of cleanroom users.

Our **Clean4Work** collection meets the latest European standards for cleanroom garments.

For every cleanroom application, **Alsico** offers the best solution.



| | |
|--|-----------|
| 1. Cleanroom | 4 |
| 2. Garment Options | 6 |
| 2.1. Garment options for hoods and caps | 6 |
| 2.2. Garment options for coveralls | 8 |
| 2.3. Garment options for boots and overshoes | 10 |
| 3. Cleanarea | 12 |
| 3.1. Antibacterial Clean Air Suits | 14 |
| 3.2. Clean Air Coverall | 14 |
| 3.3. Standard Clean Air Suits | 16 |
| 4. ESD | 18 |
| 5. Food | 20 |

1. Cleanroom


In a cleanroom environment, people are the most important source of contamination. The continual renewal of the epidermis produces dead cells which can be carriers of bacteria. Our cleanroom garments hold these cells and other particles inside the garment to prevent contamination of the cleanroom itself.

A. Comfortable cleanroom coverall

Art.Nr. A1433502 Pierre

- elastic at the sleeves
- elastic at the legs
- thumb-loop
- metal studs at the inner and outer-leg to attach the boots
- elastic in the back

Fabric: Alsiclean Royal Blue

Also available in **1** and **2**, see flap. 




B. Closed hood

Art.Nr. K9903492 Paul

- ribbons at the bottom to avoid the hood lifting
- elastic and buckle at the back to tighten the hood

Fabric: Alsiclean Royal Blue

Also available in **1** and **2**, see flap. 




C. Boots with P sole

Art.Nr. K9986005

- closure with 2 x 1 piece plastic buckle
- elastic at the top
- metal studs at the sides to attach to the coverall

Fabric: Alsiclean Royal Blue

Also available in **1** and **2**, see flap. 




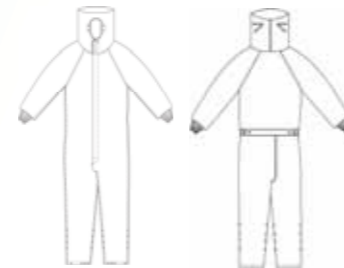
D. Coverall with integrated hood

Art.Nr. K1042005

- styled comfort fit
- knitted polyester cuffs at the sleeves
- knitted polyester cuffs at the legs
- elastic in the waist
- metal studs at the hood to attach a face mask
- ribbon at the back to adjust the hood

Fabric: Vektron 4003 white

Also available in **1** and **2**, see flap. 



E. Boots with TPU sole

Art.Nr. A9201549 Simon

- closure with 2 x 2 piece plastic buckle
- with ribbon + metal studs at the top of the boot
- elastic at the top to tighten the boot around the calf

Fabric: Vektron 4003 white

Also available in **1** and **2**, see flap. 



F-I. Face mask

Art.Nr. A9286344 Isidoor

- with metal studs to attach to the hood

Also available in **1** and **2**, see flap. 



G. Standard coverall

Art.Nr. A1433806 Mathijs

- metal studs at the sleeves
- metal studs at the legs

Fabric: Alsipharma light blue

Also available in **1** and **2**, see flap. 



NEW

H. Standard hood

Art.Nr. A9204444 Maurice

- metal studs to attach a face mask
- metal studs as front closure
- metal studs at the back to adjust the hood

Fabric: Alsipharma light blue

Also available in **1** and **2**, see flap. 



NEW

I. Long socks with knitted fabric around the calf

See page 10 (N.)





2. Garment options

The correct garment design and fit are as important in defining the performance as the fabric properties. Alsico offers different accessories all of which provide complete body cover without particle leakage or blow-out.



2.1. Garment options for hoods and caps

- A. Metal studs as front closure
- B. Metal studs to adjust the hood
- C. Metal studs to attach the face mask
- D. Face mask A9286344
- E. Polyester ribbon at the back to adjust the hood
- F. Polyester ribbon with buckle at the back to adjust the hood
- G. K9903005 closed hood with integrated 2 layer face mask
Also available in **1** and **2**, see flap. 
- H. Cap
Also available in **1** and **2**, see flap. 

Every garment can be adapted to your own special requires and wishes. Please, contact our High Tech department for more information.

2.2. Garment options for coveralls

Sleeves:

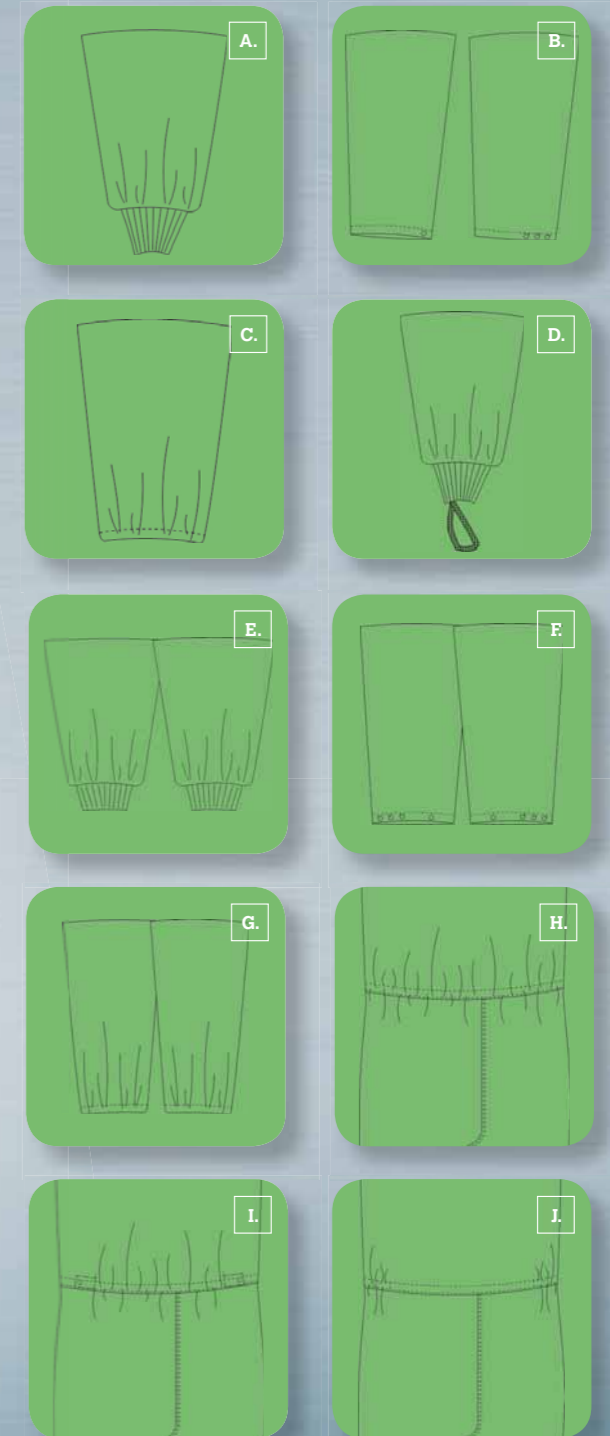
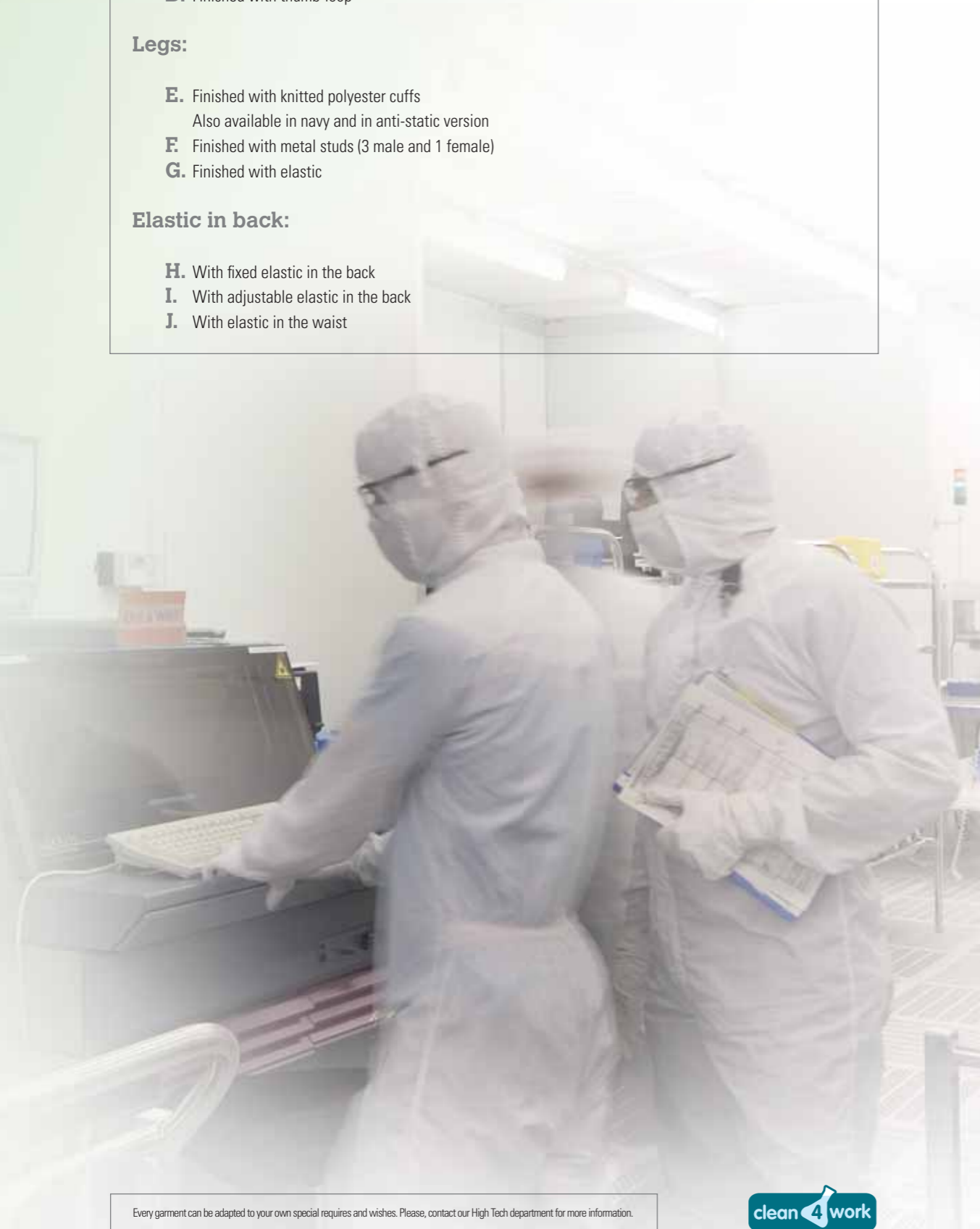
- A. Finished with knitted polyester cuffs
Also available in navy blue and in anti-static version
- B. Finished with metal studs (3 male and 1 female)
- C. Finished with elastic
- D. Finished with thumb-loop

Legs:

- E. Finished with knitted polyester cuffs
Also available in navy and in anti-static version
- F. Finished with metal studs (3 male and 1 female)
- G. Finished with elastic

Elastic in back:

- H. With fixed elastic in the back
- I. With adjustable elastic in the back
- J. With elastic in the waist



2.3. Garment Options for boots and overshoes

Top of the boot

- A. Elastic
- B. Ribbon + studs in combination with elastic
- C. Elastic at the back and ribbons at the front

Front closure

- D. Zipper
 - E. One piece metal buckle
 - F. One piece plastic buckle
 - G. Two piece plastic buckle
- Also available in gamma resistant compound


Different soles

- H. P sole**
Rubber sole, steam and ETO resistant
Excellent anti-slippage performance
- I. Gamma P sole**
TPU sole, gamma and ETO resistant
Excellent anti-slippage performance
- J. Alsiclean sole**
Rubber sole, steam and ETO resistant
Excellent durability after several sterilizations
- K. Alsico TPU sole**
TPU sole, gamma and ETO resistant
Excellent durability after several sterilizations
- L. Flat sole**
Rubber sole, steam and ETO resistant.
Excellent durability after several sterilizations


NEW

NEW

M. Overshoe with soft sole

Art.Nr. A9291227
Fabric: Alsiclean Royal Blue
Available in sizes xs – xxl
Also available in **1** and **2**, see flap. 

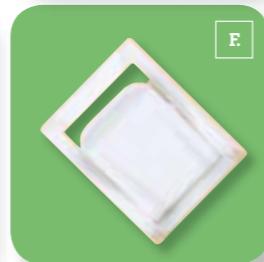
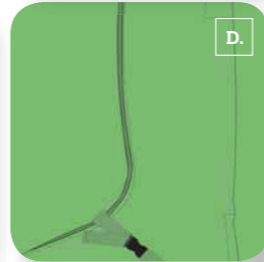
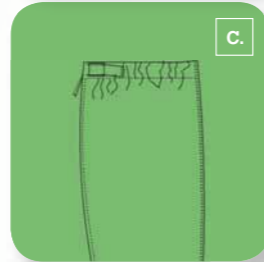
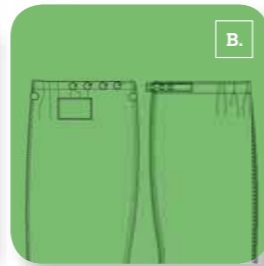
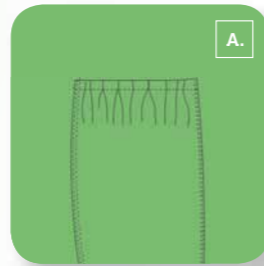
N. Long socks with knitted fabric around the calf

Art.Nr. K9086005
Fabric: Alsipharma light blue
Available in sizes xs – xxl
Also available in **1** and **2**, see flap. 

O. Cleanroom ESD boots

Art.Nr. H9279888-9990101
White
Available in sizes xs – xxl

NEW



3. Cleanarea

Alsico garments for use in cleanarea are extremely comfortable to wear both for overgarments and underclothing. Fabrics of 100% microfilament polyester provide comfort due to higher air and moisture transportation together with a high particle barrier performance. Available with or without antistatic fibre.



Every garment can be adapted to your own special requires and wishes. Please, contact our High Tech department for more information.



3.1. Anti-bacterial clean air suits


A. Long sleeve tunic with small V-neck

Art.Nr. A3161344 Isidoor

- metal studs at the shoulder
- metal studs at the sleeves to tighten around the wrist

Fabric: Toray Agora Anti-bact Navy

Available in sizes xs – xxl

Also available in **2** and **3**, see flap. 

NEW



B. Trousers with elastic at the back

Art.Nr. A2295454 Mike

- drawstring in the waist
- metal studs at the bottom of the leg to adjust the trousers around the ankle

Fabric: Toray Agora Anti-bact Navy

Available in sizes xs – xxl

Also available in **2** and **3**, see flap. 

NEW



C. Long sleeve T shirt with round neck

Art.Nr. K9157190

- styled comfort fit!

Fabric: anti-static, anti-bacterial jersey in white

Available in sizes xs – xxl

Also available in **2** and **3**, see flap. 

NEW



D. Trousers with knitted cuffs at the legs

Art.Nr. K2154005

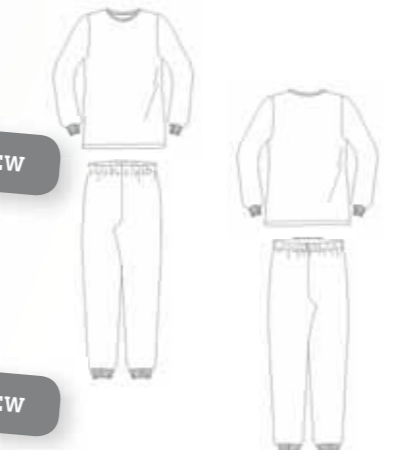
- styled comfort fit!

Fabric: anti-static, anti-bacterial jersey in white

Available in sizes xs – xxl

Also available in **2** and **3**, see flap. 

NEW



3.2. Standard Clean Air Coverall


E. Grade C coverall

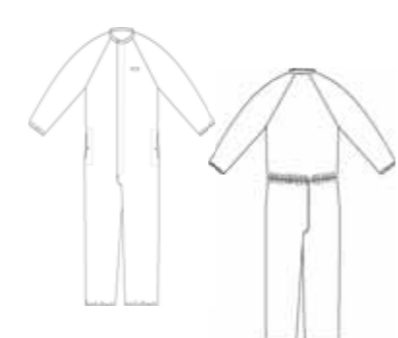
Art.Nr. A1433504 Piet

- elastic at the sleeves
- elastic at the legs
- side openings closed by metal studs
- elastic in the back
- penloop

Fabric: Vektron 8200 light blue

Available in sizes xs – xxl

Also available in **1** and **2**, see flap. 



3.3. Standard clean air suits

A. Short sleeve T shirt with round neck

Art.Nr. K3149190 Cedric

- round neck finished with knitted fabric
- ultra lightweight!

Fabric: Alsisandwash anti-static light grey

Available in sizes xs – xxl

Also available in **2** and **3**, see flap. 



B. Trousers with knitted cuffs at the legs

Art.Nr. A2228762 Ismael

- elastic in the waist
- ultra lightweight!

Fabric: Alsisandwash anti-static light grey

Available in sizes xs – xxl

Also available in **2** and **3**, see flap. 


C. Short sleeve Tunic with V-neck

Art.Nr. K3374005

- 1 chest pocket
- 2 hip pockets
- sleeves finished with knitted fabric
- bottom finished with knitted fabric
- super soft touch!

Fabric: Ostendia Ice blue

Available in sizes xs – xxl

Also available in **2** and **3**, see flap. 




D. Trousers with knitted cuffs at the legs

Art.Nr. K2108955

- 1 back pocket
- elastic and drawstring in the waist
- super soft touch!

Fabric: Ostendia Ice blue

Available in sizes xs – xxl

Also available in **2** and **3**, see flap. 




E. Dust coat

Art.Nr. A6677259

- 1 inside chest pocket
- 2 hip pockets

Fabric: Linstat® Negastat® 150 light blue

Available in sizes xs – xxl

Also available in **1** and **2**, see flap. 

F. Tunic with V-neck

Art.Nr. A3161438 Martin

- extra protection flap
- metal studs at the sleeves to tighten the sleeve around the wrist

Fabric: Vektron 8200 white

Available in sizes xs – xxl

Also available in **2** and **3**, see flap. 


G. Trousers

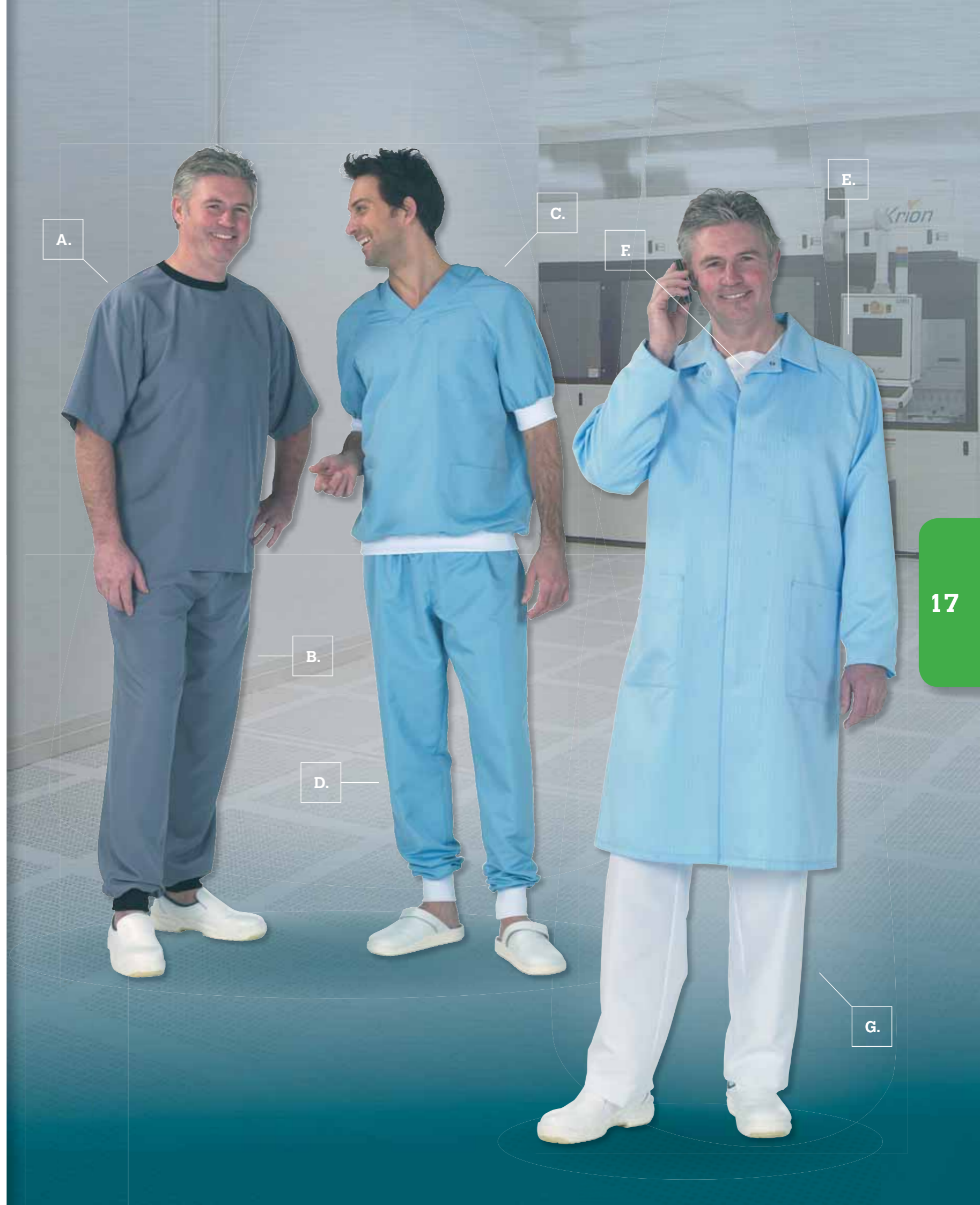
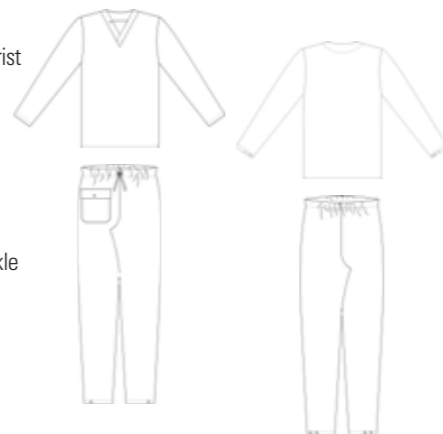
Art.Nr. A2295438 Martin

- metal studs at the legs to tighten the trousers around the ankle
- elastic in combination with drawstring in the waist
- practical front pocket with flap and metal stud

Fabric: Vektron 8200 white

Available in sizes xs – xxl

Also available in **2** and **3**, see flap. 



4. ESD

Alsico ESD garments have been designed and engineered to provide optimum protection to ESD overstress discharge within the most critical areas of microelectronic component manufacture and assembly. Alsico garments meet all recognised international standards for ESD.

A. ESD Dust coat

Art.Nr. A6677001

- 1 chest pocket
- 1 inside chest pocket
- 2 hip pockets

Fabric: Cleantec® white

Available in stock from size S to XXL

STOCK




B. ESD Dust coat in Pes/Co

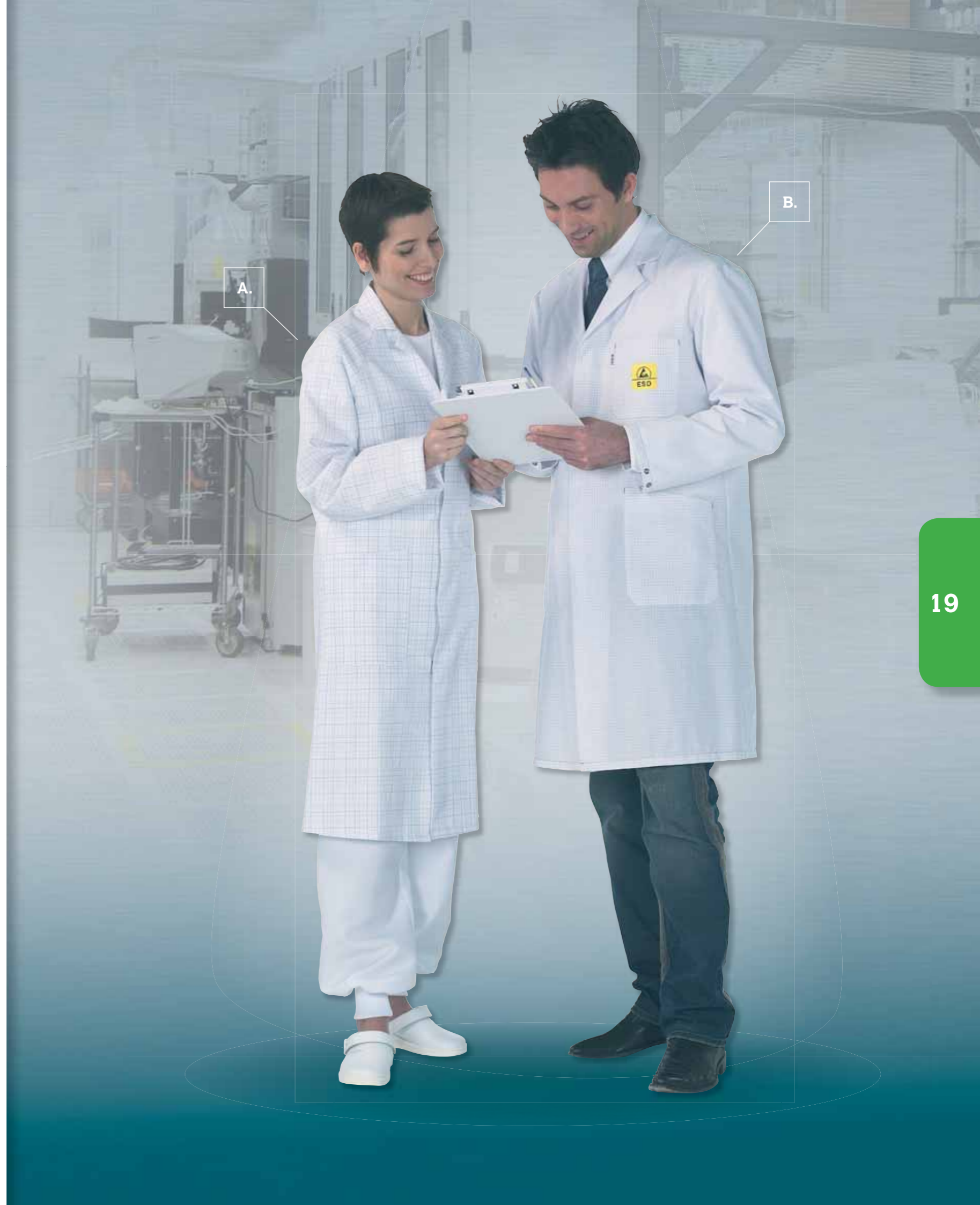
Art.Nr. A6626697

- 1 chest pocket
- 1 inside chest pocket
- 2 hip pockets

Fabric: Startec 180 white

Available in sizes xs – xxl

Also available in **1** and **2**, see flap. 



Every garment can be adapted to your own special requires and wishes. Please, contact our High Tech department for more information.

5. Food

To guarantee an optimal hygiene and high quality products in an industrial food production environment, it's necessary to use clean area (Class 10.000 – 100.000) garments. Alsico clean area garments are specially designed to prevent contamination of your product and your clean environment.

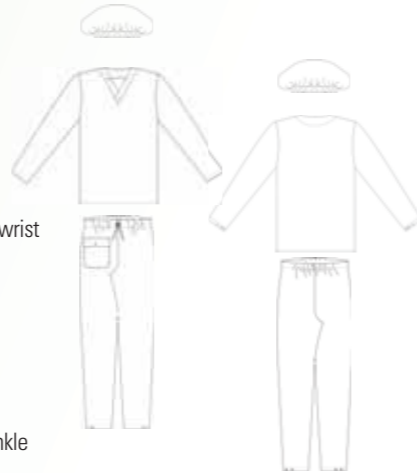
A. Hat finished with knitted fabric

Art.Nr. K9901005

Fabric: Alsidoux light blue

Available in sizes xs – xxl

Also available in **1.** and **2.**, see flap. 



B. Long-sleeve tunic with V-neck

Art.Nr. A3161438 Martin

- extra protection flap

- metal studs at the sleeves to tighten the sleeve around the wrist

Fabric: Alsidoux light blue

Available in sizes xs – xxl

Also available in **2.** and **3.**, see flap. 

C. Trousers

Art.Nr. A2295438 Martin

- metal studs at the legs to tighten the trousers around the ankle

- elastic in combination with drawstring in the waist

- practical front pocket with flap and metal stud

Fabric: Alsidoux light blue

Available in sizes xs – xxl

Also available in **2.** and **3.**, see flap. 

D. Open hood with visor

Art.Nr. K9153005

- with earpieces

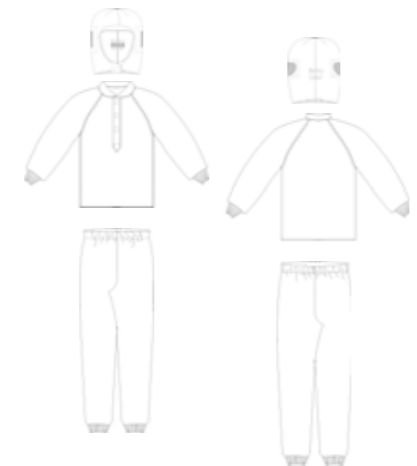
- tight-fitting

- closure with velcro

Fabric: is Vektron 8200 white

Available in sizes xs – xxl

Also available in **1.** and **2.**, see flap. 



E. Long-sleeve tunic

Art.Nr. A3654001

- upstanding collar

- sleeves finished with knitted cuffs

- closure with velcro

Fabric: Vektron 8200 white

Available in sizes xs – xxl

Also available in **2.** and **3.**, see flap. 

F. Trousers

Art.Nr. A2295841 Andreas

- finished with knitted cuffs at the legs

- and elastic in the waist

Fabric: Vektron 8200 white

Available in sizes xs – xxl

Also available in **2.** and **3.**, see flap. 





Cleanroom classes

Iso cleanroom standards 14644-1 versus US FED STD 209E cleanroom standards versus EU GMP

| ISO Class | FED STD Class | EU GMP | Particles per m ³ | | | | | | |
|-----------|---------------|---------|------------------------------|---------|---------|-----------|---------|--------|--|
| | | | 0,1µm | 0,2µm | 0,3µm | 0,5µm | 1 µm | 5 µm | |
| ISO 3 | 1 | | 1000 | 237 | 102 | 35 | 8 | | |
| ISO 4 | 10 | | 10.000 | 2370 | 1020 | 352 | 83 | | |
| ISO 5 | 100 | Class A | 100.000 | 23.700 | 10.200 | 3.520 | 832 | 29 | |
| ISO 6 | 1000 | | 1.000.000 | 237.000 | 102.000 | 35.200 | 8320 | 293 | |
| ISO 7 | 10.000 | Class B | | | | 352.000 | 83.200 | 2930 | |
| ISO 8 | 100.000 | Class C | | | | 3.520.000 | 832.000 | 29.300 | |

Our standard fabric and colour range =

1. → Cleanroom 'Class 10 – 100' fabrics

1.1. **Alsipharma:** 98%Polyester/2%Carbon fabric, 105 gr/m², plain weave with a carbon grid,micro-filament.



NEW

1.2. **Alsistrong:** 99%Polyester/1%Carbon fabric, 110 gr/m², twill 3/2 with a carbon grid,micro-filament.



1.3. **Alsiclean:** 99%Polyester/1%Carbon fabric, 100 gr/m², twill 2/1 with a carbon grid,micro-filament.



1.4. **Alsi Anti-bact:** 99%Polyester/1%Carbon fabric, 110gr/m², twill 2/1 with a carbon grid, multi-filament, anti-bacterial yarn.



NEW

1.5. **Vektron 3005:** 99%Polyester/1%Carbon fabric, 115 gr/m², twill 2/2 with a carbon grid, micro-filament..



1.6. **Vektron 4003:** 99%Polyester/1%Carbon fabric, 98 gr/m², plain weave with a carbon grid, micro-filament.



2. → Cleanroom / Cleanarea 'Class 1000 – 100.000' fabrics

2.1. **Alsidoux:** 99,5%Pontella Polyester/0,5%Carbon, 100 gr/m², plain weave with a 10 mm carbon line .



2.2. **Cleantec®:** 99,6%Pontella Polyester/0,4%Carbon fabric,150 gr/m², twill 2/1 with a carbon grid structure.



!This fabric is also available with anti-acid finish!

2.3. **Linstat® Negastat®:** 98%Pontella Polyester/2%Carbon fabric, 170 gr/m², twill 2/1 with a 10 mm carbon grid.



2.4. **Startec 180:** 65%Polyester/33%Cotton/2%Metal yarns, 180 gr/m², plain weave with a 5 mm carbon grid.

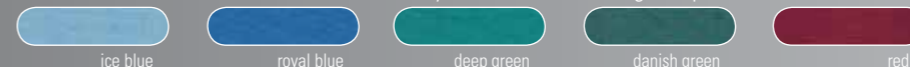


2.5. **Vektron 8200:** 100%Pontella Polyester fabric, 150 gr/m², plain weave.



3. → Clean Air Suits

3.1. **Ostendia anti-static:** 99%Micro-Polyester/1%Carbon, 130 gr/m², plain weave with a carbon line.



3.2. **Toray anti-bact:** 96%Polyester/4%X-static, 90 gr/m², plain weave.



NEW

3.3. **Alsisandwash anti-static:** 99%Polyester/1%Carbon fabric, 95 gr/m², plain weave with a 5 mm carbon line.



3.4. **Jersey anti-bact & anti-static:** 94%Polyester/6%Silveryarns, 133 gr/m², with a carbon yarn.



NEW



YKK

Little Parts. Big Difference.

'TORAY'



Lauffenmühle
textile Innovation

With thanks to:



ALSICO

more than workwear



Alsico's services go far beyond simple production of workwear. After a detailed analysis of the needs and hazards, we help our customer in selecting the fabric, the model, the accessories ...

In this way, our clothes perfectly meet the customer's requirements regarding use, hazards and treatments. This leads to the perfect combination between comfort, image, protection and price.

Moreover, our production takes place in working conditions that meet the standards of the ILO-conventions and the "Clean Clothes Campaign".